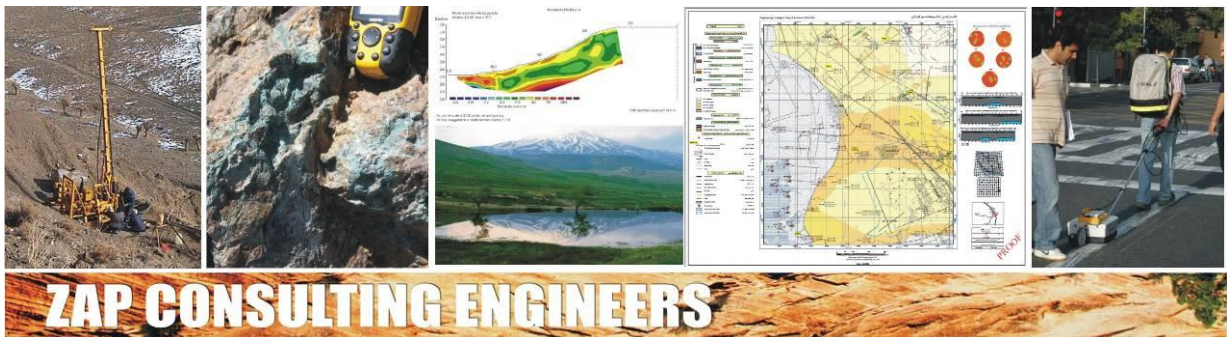




ZAP Consulting Engineers (ZAPCE)

Case studies

Updated on 2015/Aug./15



No. 43, Afshar Javan St., Sohrevardi Shomali Ave.

Tehran, Iran

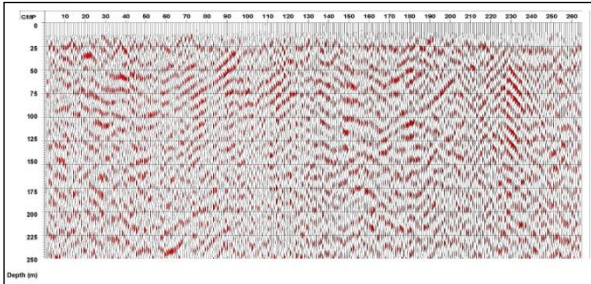
Tel & Fax: (+98 21) 88733705-88734309-88756113-88761595

Email: info@zapce.net

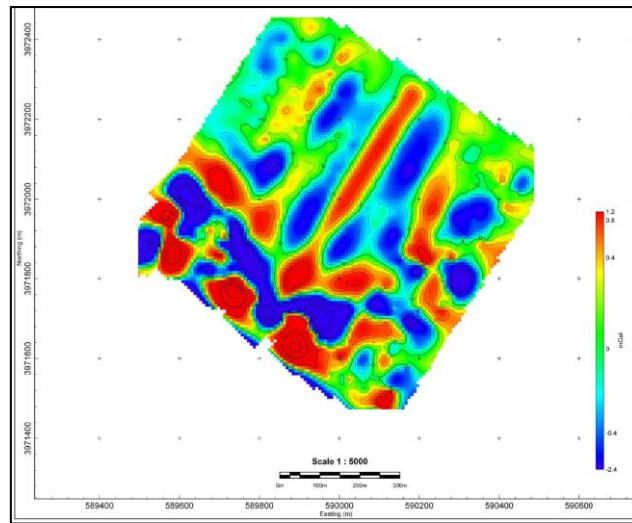
Website: www.zapce.net

Geophysical investigations (case study)

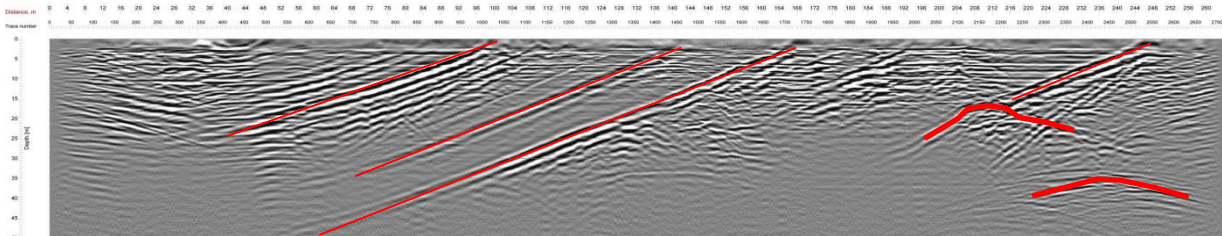
Gravimetric method



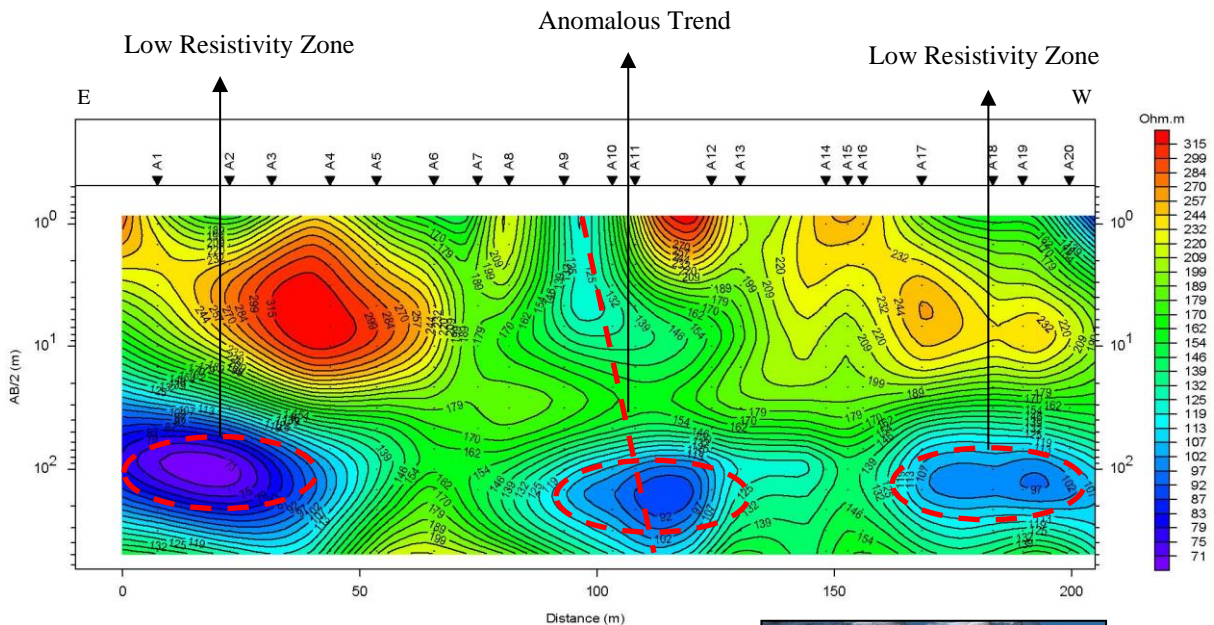
Reflection seismic technique



Ground penetrating radar (GPR) method



Geoelectric method



Lar dam rehabilitation studies, Tehran, Iran (2008).

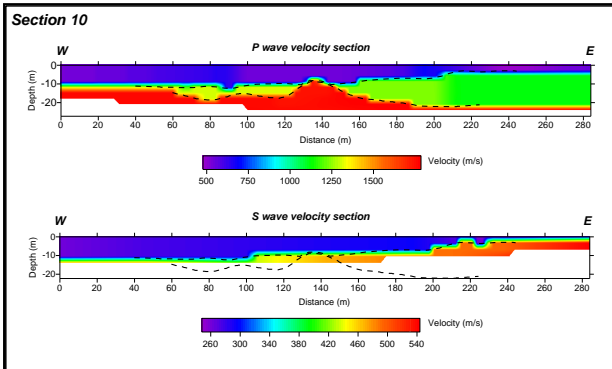


No. 43, Afshar Javan St., Sohrevardi Shomali Ave., Tehran, Iran
 Tel & Fax: +98 21 88733705-88734309-88756113-88761595
 Website: www.zapce.net
 E-mail: info@zapce.net

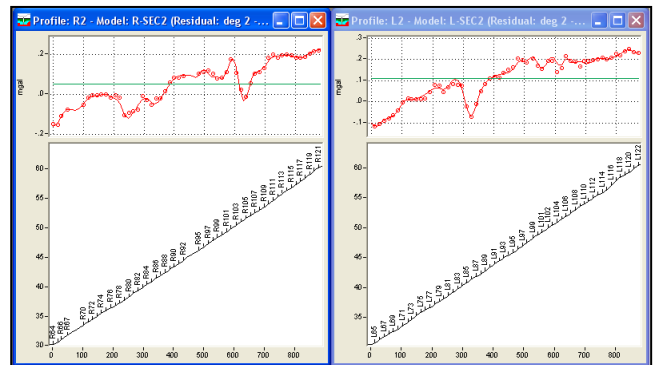


Geophysical investigations (case study)

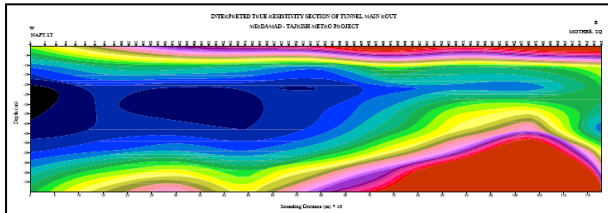
Refraction seismic technique



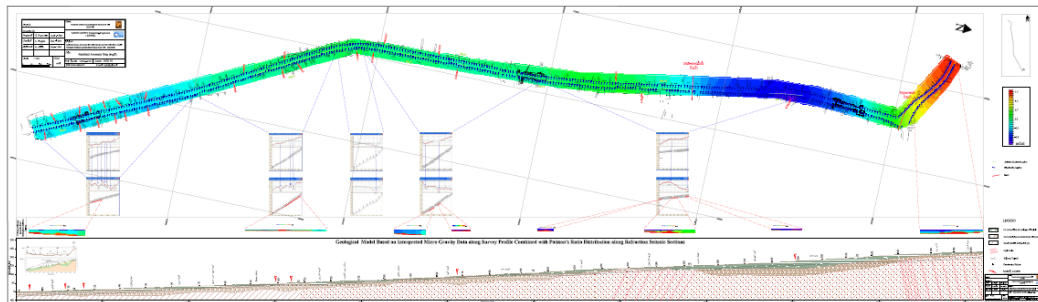
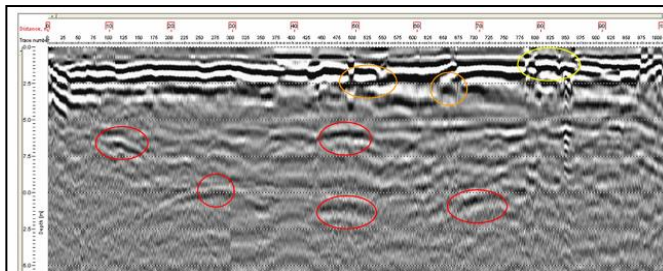
Gravimetric method



Geoelectric method



Ground penetrating radar (GPR) method



Tehran metro, line 1 geophysical studies, Tehran, Iran (2006-2007).

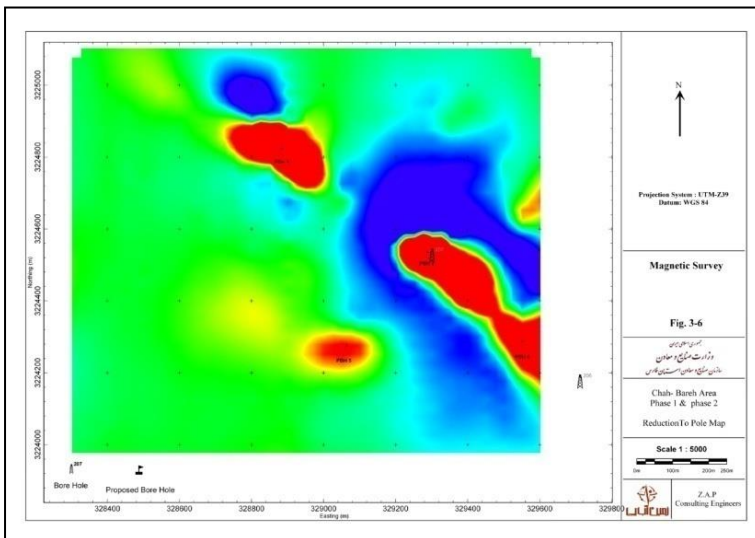
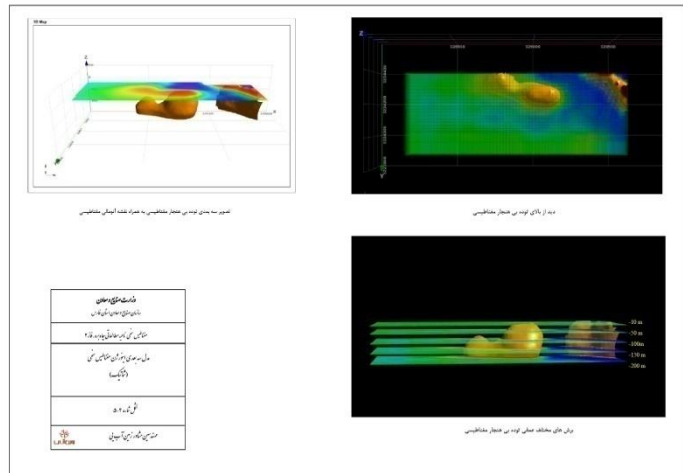
No. 43, Afshar Javan St., Sohrevardi Shomali Ave., Tehran, Iran
 Tel & Fax: +98 21 88733705-88734309-88756113-88761595
 Website: www.zapce.net
 E-mail: info@zapce.net



Iron ore exploration (case study)



Drilling

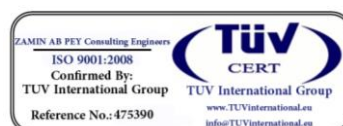


3d Modeling of iron ore

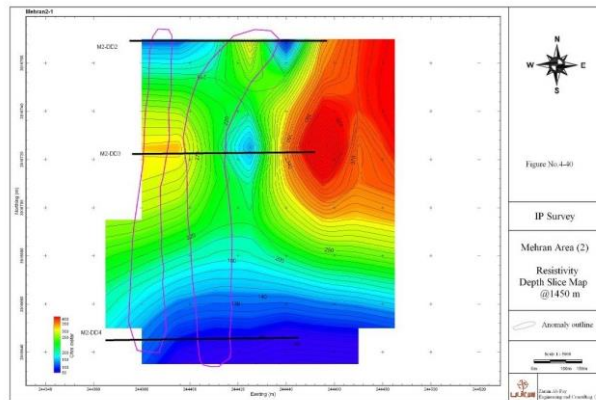


Chah Bareh, Golgohar, Iran (2008).

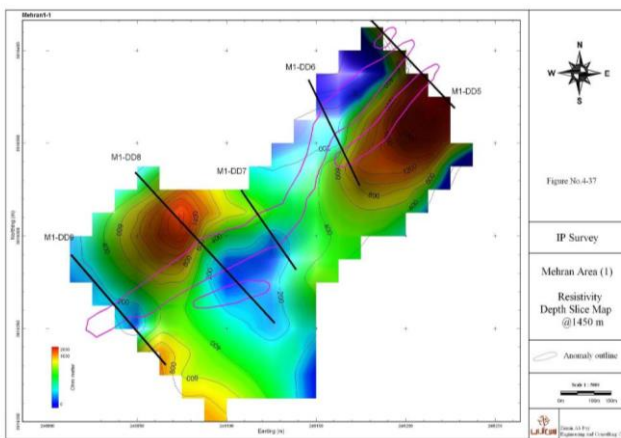
No. 43, Afshar Javan St., Sohrevardi Shomali Ave., Tehran, Iran
Tel & Fax: +98 21 88733705-88734309-88756113-88761595
Website: www.zapce.net
E-mail: info@zapce.net



Copper deposit exploration (case study)



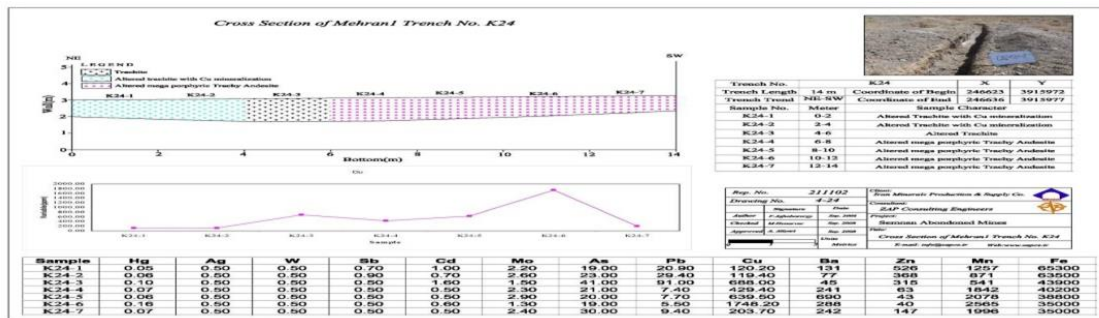
Geophysical exploration operations (IP-RS method)



Trenching



Drilling and core making



Kalat-e Mehran, Semnan, Iran (2007).

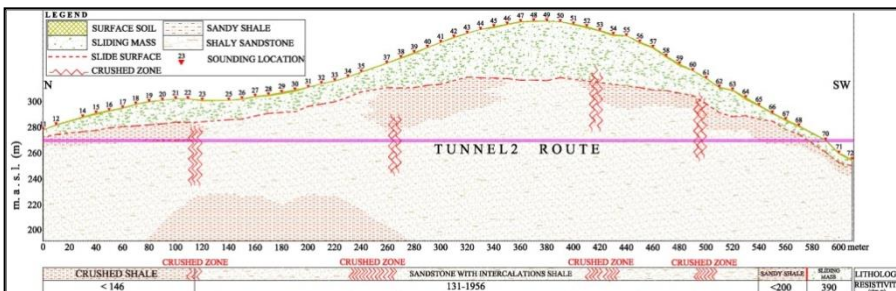
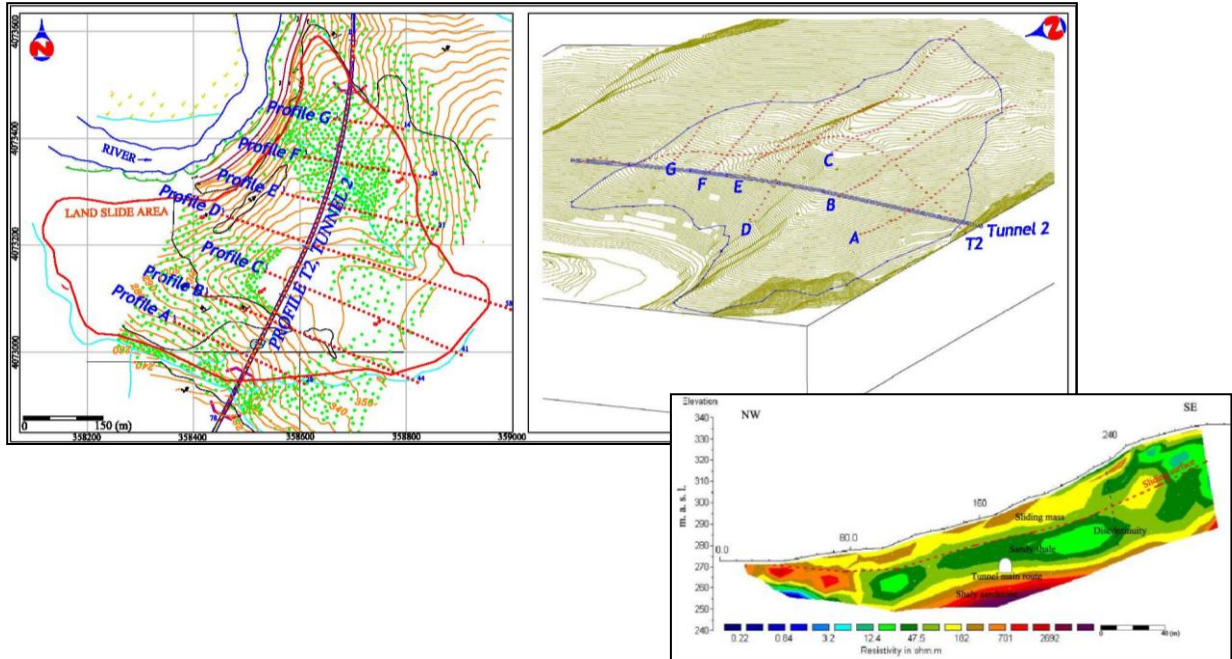
No. 43, Afshar Javan St., Sohrevardi Shomali Ave., Tehran, Iran
 Tel & Fax: +98 21 88733705-88734309-88756113-88761595
 Website: www.zapce.net
 E-mail: info@zapce.net



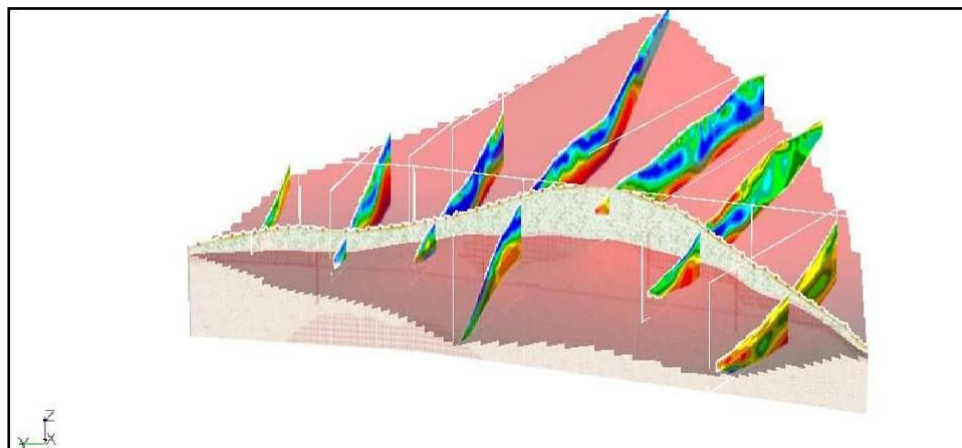
Geophysical investigations Goelectric method



Landslide hazard investigation (case study)



Geological model



3d model of geoelectrical sections

Geophysical investigation along Qazvin-Rasht-Anzaly railroad, Iran (2005).

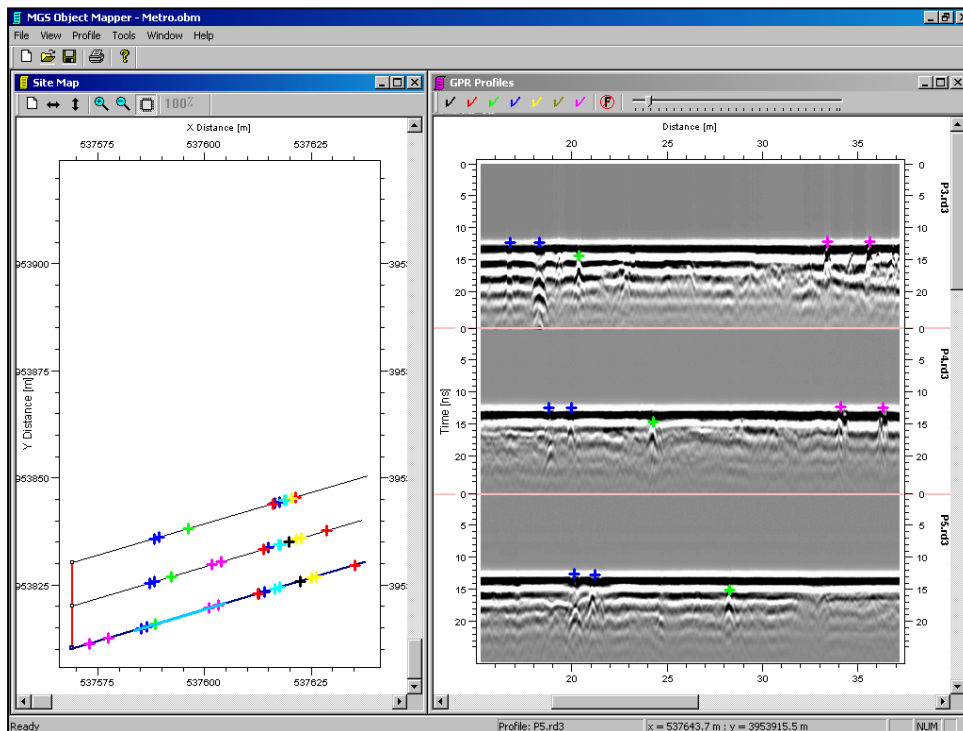
No. 43, Afshar Javan St., Sohrevardi Shomali Ave., Tehran, Iran
 Tel & Fax: +98 21 88733705-88734309-88756113-88761595
 Website: www.zapce.net
 E-mail: info@zapce.net



Geophysical investigations Ground penetrating radar (GPR) method



Sub-surface utility detection (case study)



Shahid Beheshti Ave., Tehran, Iran (2007).

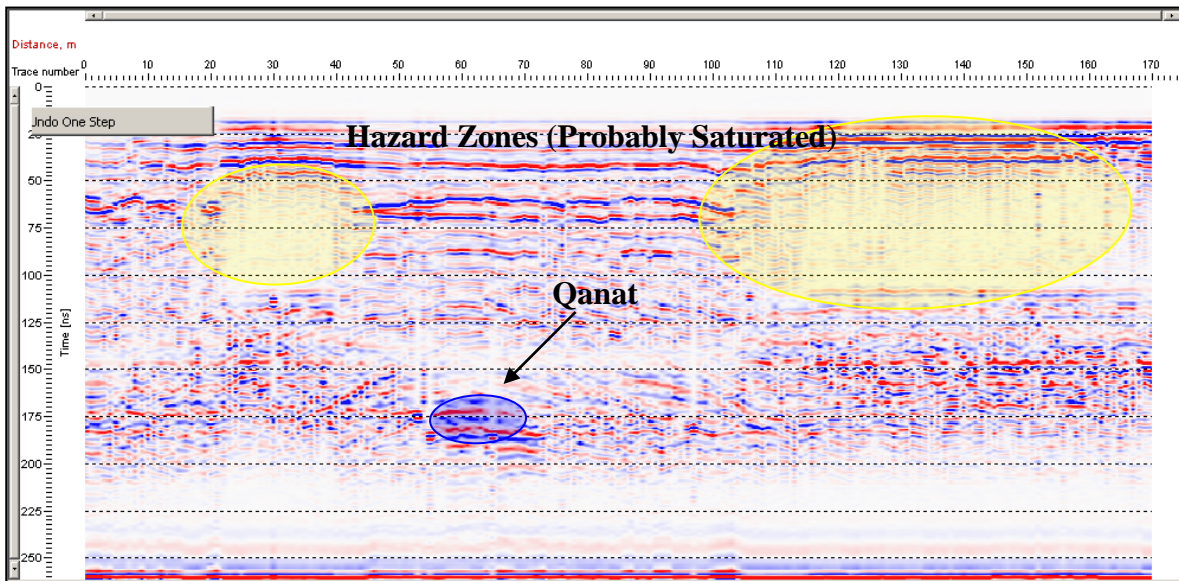
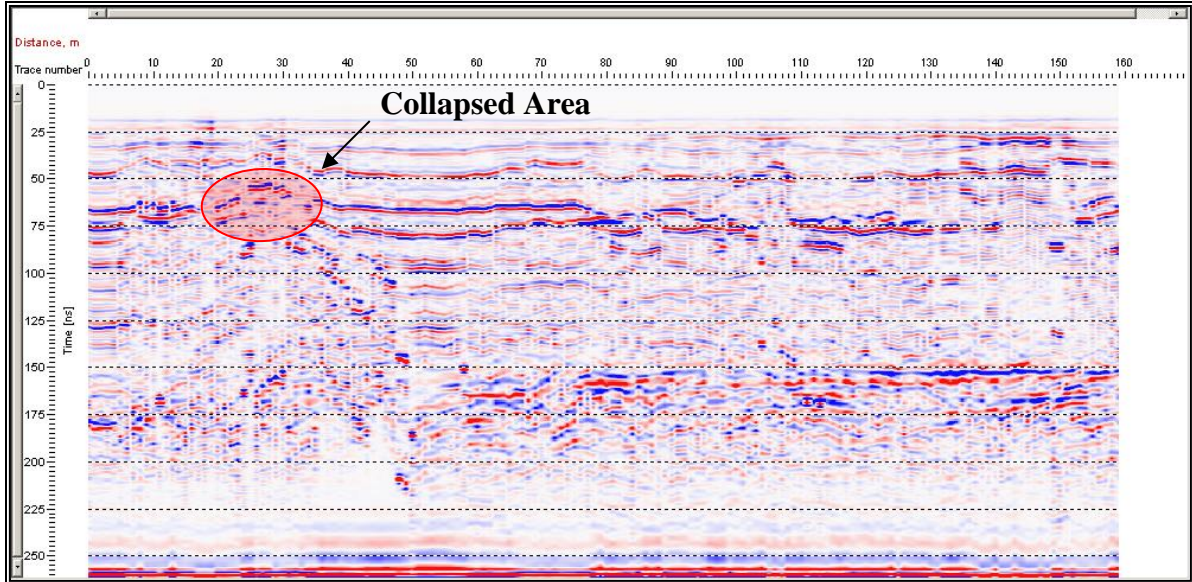
No. 43, Afshar Javan St., Sohrevardi Shomali Ave., Tehran, Iran
Tel & Fax: +98 21 88733705-88734309-88756113-88761595
Website: www.zapce.net
E-mail: info@zapce.net



Geophysical investigations Ground penetrating radar (GPR) method



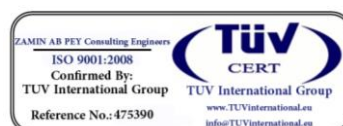
Cavities, voids and qanats detection (case study)



Valiabad qanat, Varamin, Iran (2007).



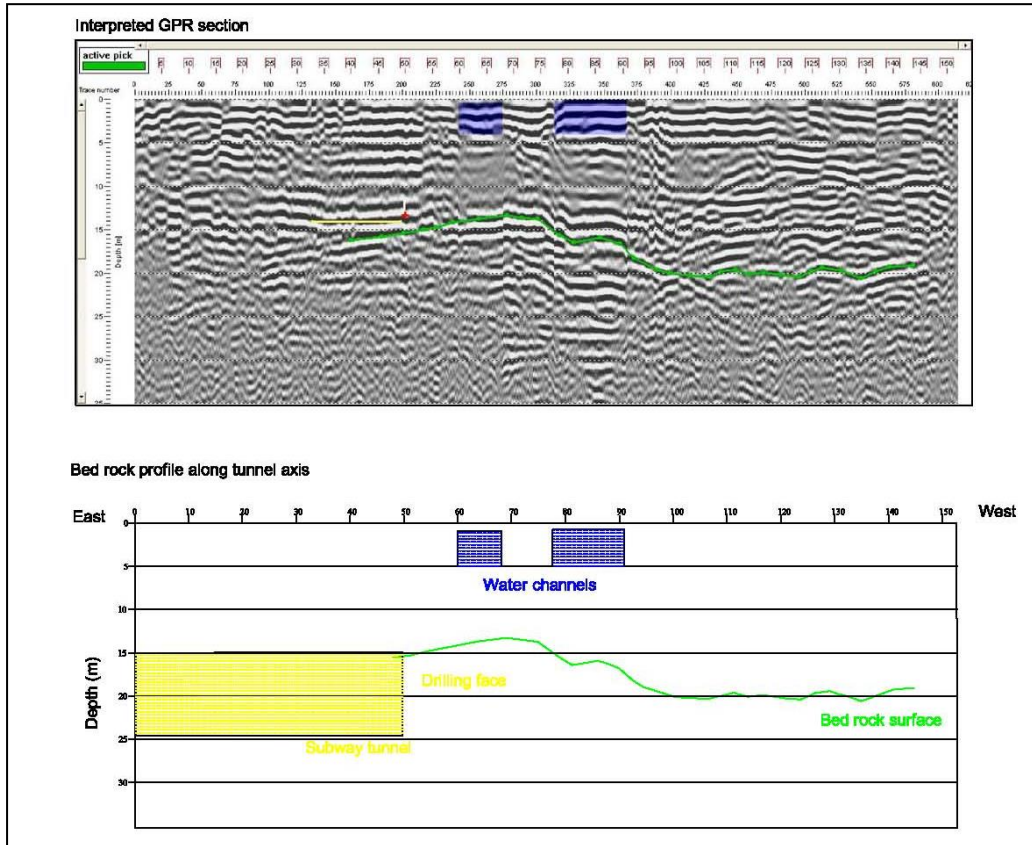
No. 43, Afshar Javan St., Sohrevardi Shomali Ave., Tehran, Iran
Tel & Fax: +98 21 88733705-88734309-88756113-88761595
Website: www.zapce.net
E-mail: info@zapce.net



Geophysical investigations Ground penetrating radar (GPR) method

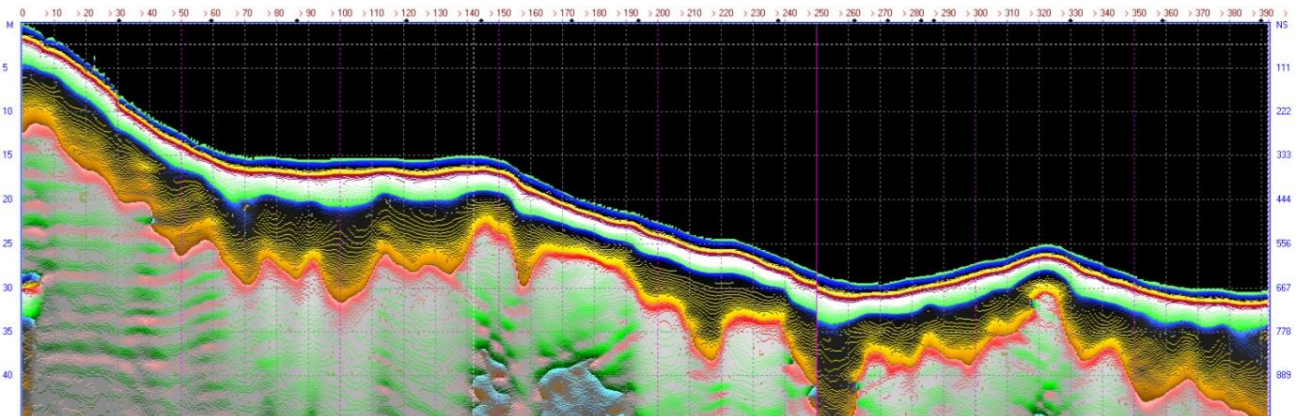


Geological boundary mapping (case study)



Piroozi Ave., Tehran metro line 4, Tehran, Iran (2007)

Landslide boundary detection (case study)



Qalehchay dam reservoir landslide, east Azerbaijan, Iran (2010).

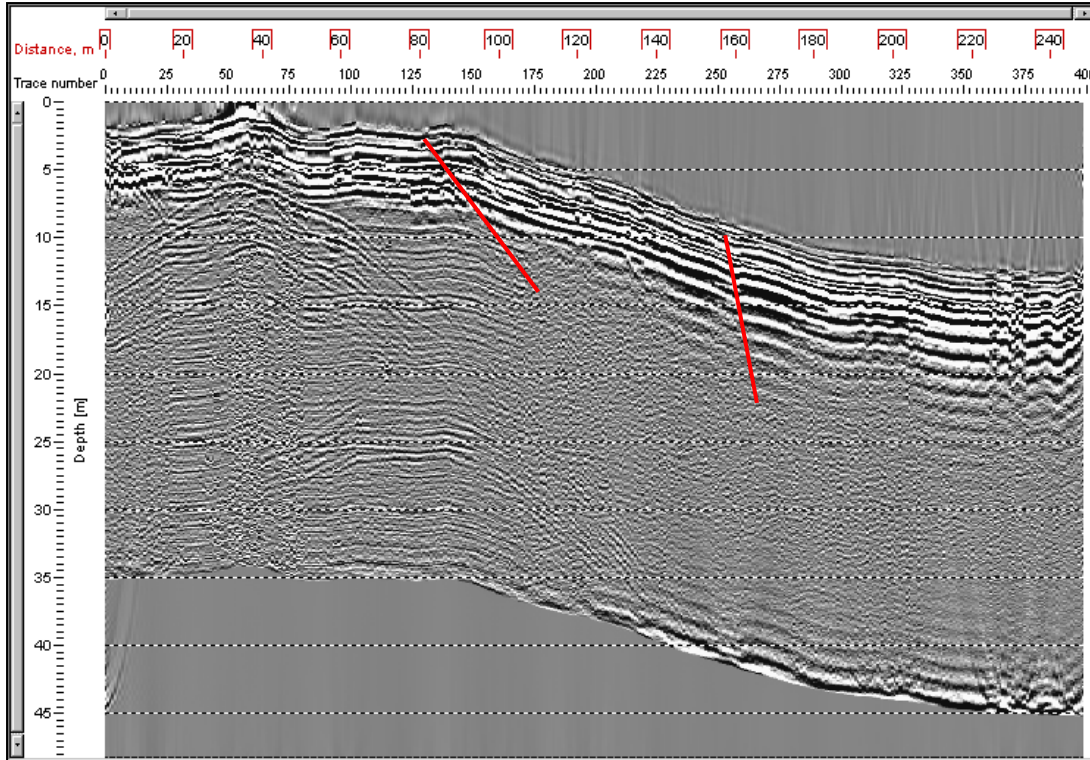
No. 43, Afshar Javan St., Sohrevardi Shomali Ave., Tehran, Iran
Tel & Fax: +98 21 88733705-88734309-88756113-88761595
Website: www.zapce.net
E-mail: info@zapce.net



Geophysical investigations Ground penetrating radar (GPR) method

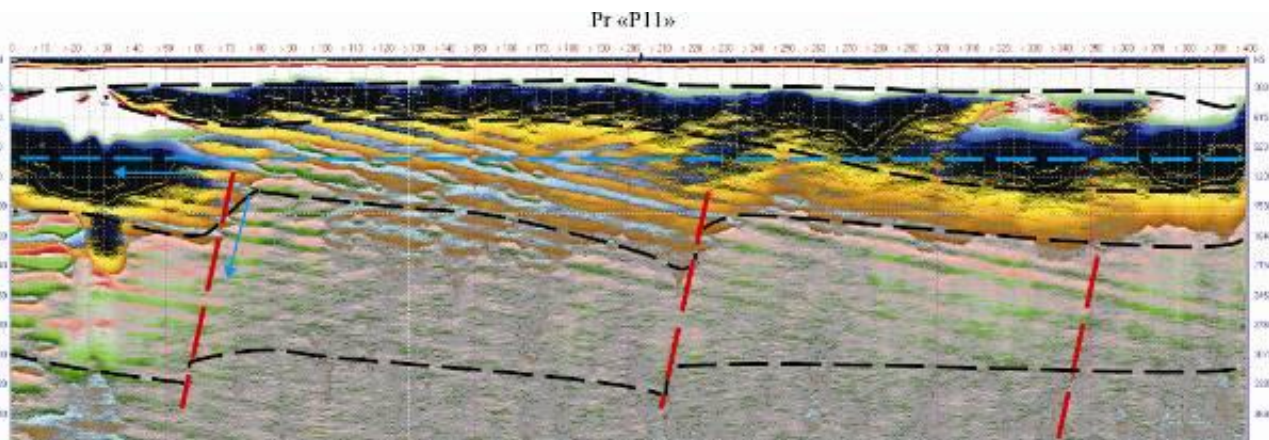


Geological boundaries and faults detection (case study)



Active faulting along Kahrizak fault, Tehran, Iran (2007)

Geological boundaries and faults detection Ground water exploration (case study)



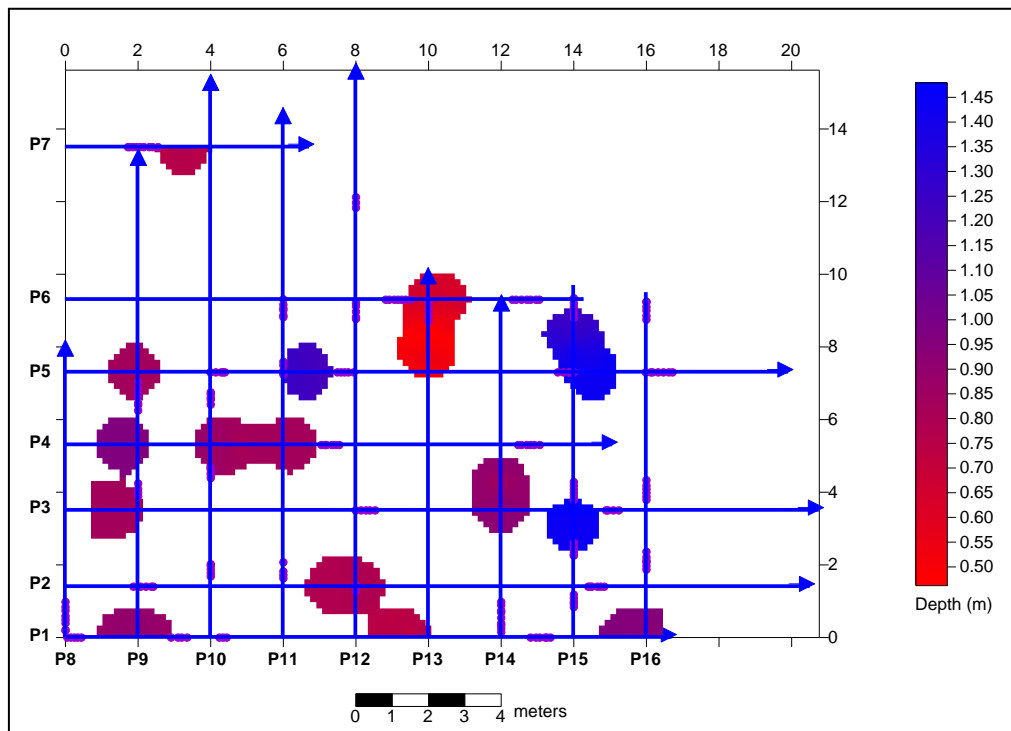
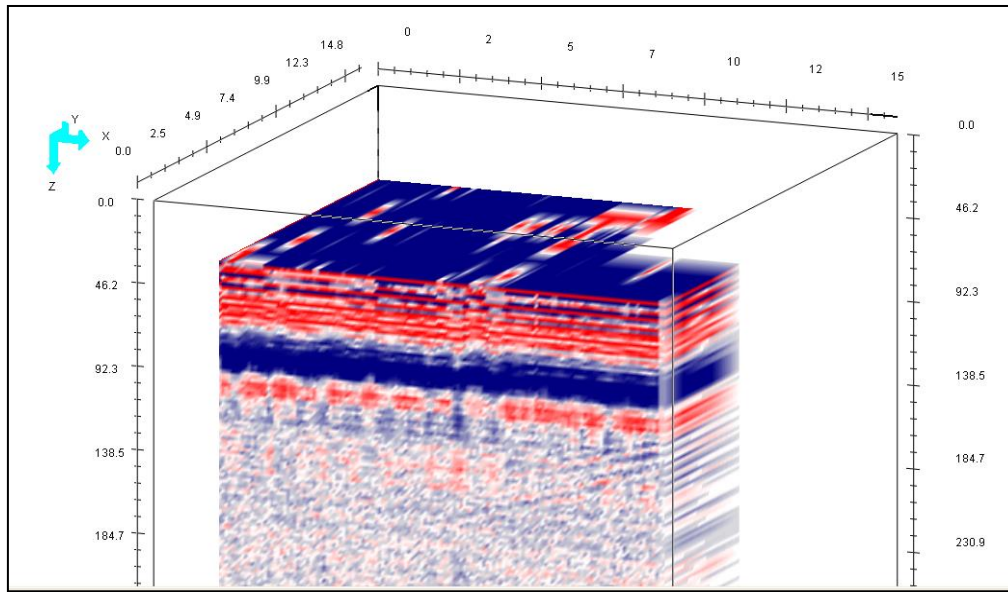
Golgohar iron mine, Sirjan, Iran (2011).

No. 43, Afshar Javan St., Sohrevardi Shomali Ave., Tehran, Iran
Tel & Fax: +98 21 88733705-88734309-88756113-88761595
Website: www.zapce.net
E-mail: info@zapce.net



Geophysical investigations Ground penetrating radar (GPR) method

3D Sub-surface investigation
Underground detection and mapping
Archaeology (case study)



Chahardange cultural center, Tehran, Iran (2007).

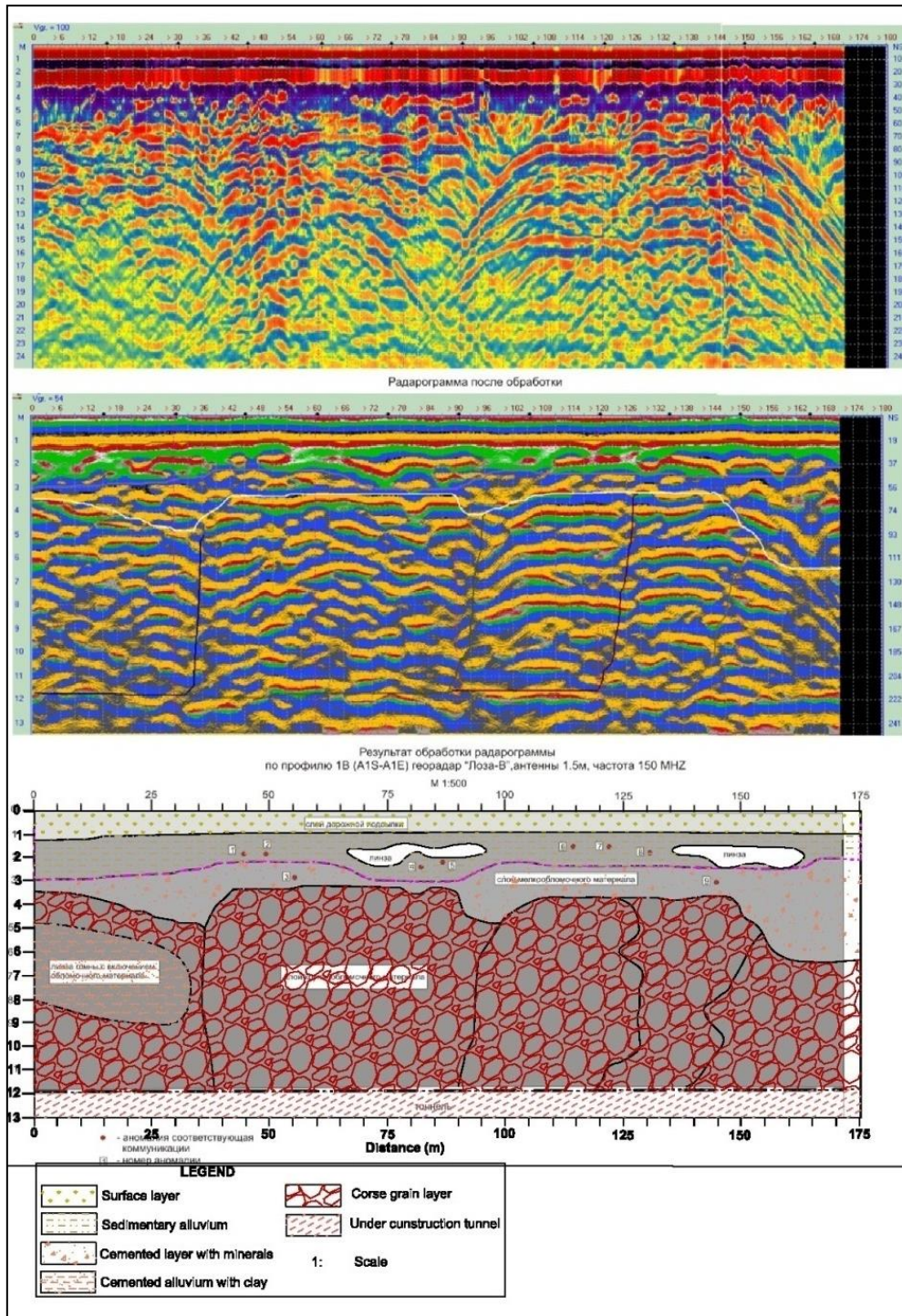
No. 43, Afshar Javan St., Sohrevardi Shomali Ave., Tehran, Iran
Tel & Fax: +98 21 88733705-88734309-88756113-88761595
Website: www.zapce.net
E-mail: info@zapce.net



Geophysical investigations Ground penetrating radar (GPR) method



Engineering geology profiling
Cavities, voids and underground investigation (case study)



Tohid tunnel, Tehran, Iran (2009).

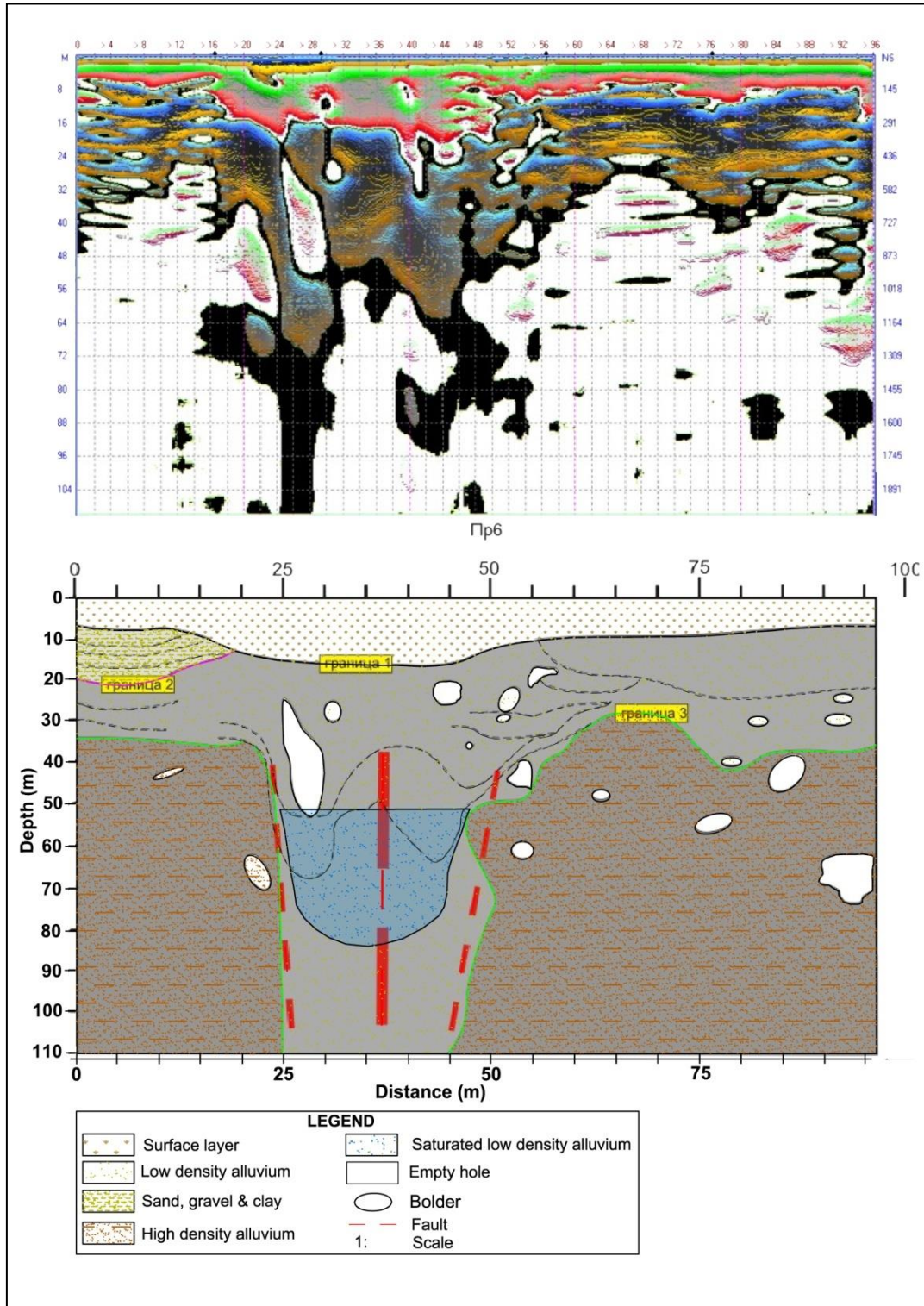
No. 43, Afshar Javan St., Sohrevardi Shomali Ave., Tehran, Iran
Tel & Fax: +98 21 88733705-88734309-88756113-88761595
Website: www.zapce.net
E-mail: info@zapce.net



Geophysical investigations Ground penetrating radar (GPR) method



Geology profiling, hydrogeology and soil stratigraphy (case study)



Niavaran fault detection, Tajrish square, Tehran, Iran (2009).

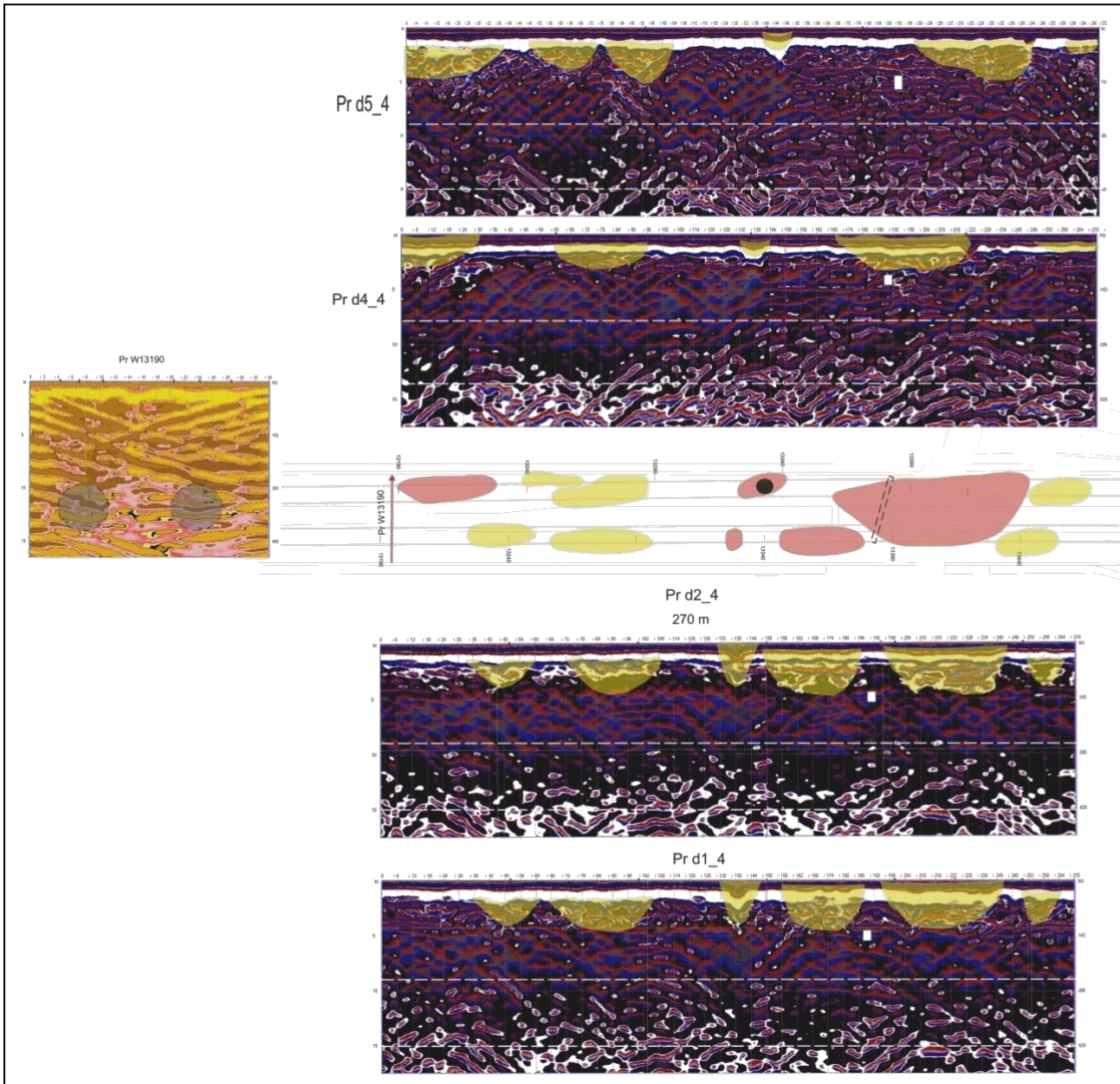
No. 43, Afshar Javan St., Sohrevardi Shomali Ave., Tehran, Iran
 Tel & Fax: +98 21 88733705-88734309-88756113-88761595
 Website: www.zapce.net
 E-mail: info@zapce.net



Geophysical investigations Ground penetrating radar (GPR) method



Engineering geology profiling
Cavities, voids and underground investigation (case study)



Shiraz metro, line 1 geophysical studies, Shiraz, Iran (2009).